



Newsletter

Welcome to Easington Academy's January 2024 Careers Newsletter.

Happy New Year, with regards to careers, we have started the year with a whole host of events, read all about it in this month's careers newsletter.

The careers newsletter aims to keep students and their families with all the latest information about careers and post-16 opportunities.

All students at Easington Academy receive targeted careers education within World Ready Sessions and within the curriculum, focusing on subject specific careers information. In addition, we provide students with a range of opportunities to access up-to-date careers information through workshops, career fairs, external events and from visitors in school.

Our Careers Programme can be accessed here: [Careers information | Easington Academy](#)

For Careers advice please contact our Careers Advisors, Mrs Collins, and Mrs Carter:
email: julieann.collins@easingtonacademy.co.uk

World of Work Week

For the first time, we hosted a World of Work Week which all students had the opportunity to engage in each day. The initiative was aimed at broadening our students' horizons and igniting their passion for future career paths. This immersive event offered a unique opportunity for all students to delve into various sectors, exploring potential career avenues, and engaging in enlightening conversations with professionals from esteemed companies, universities, and colleges. By dedicating each day to a specific sector, we aimed to provide a comprehensive insight and guidance, empowering the students to make informed decisions about their future endeavours. We hope this event plays a part in the young people's journey of discovery, exploration, and endless possibilities of which we know they all have ahead of them. **Thank you to all the providers and companies who supported our event.**



World of Work Week – we had fun exploring careers...





Newsletter

NHS Theatre

Year 8 students took part in an engaging interactive theatre presentation, looking at the variety of options for future career routes within the NHS and how these can lead to a fulfilling future. The programme is aimed at raising aspirations and motivating all students to plan for and achieve the highest level they can in education and training. They also addressed the importance of GCSEs, post-16 options, post-18 options and staying on in education until 18.

Unifrog



In keeping with our commitment to provide students with outstanding careers guidance and tailored support when choosing their next steps after school / college, we will soon be using Unifrog; an award-winning, online destinations platform. All students in Years 7, 8, 9, 10 and 11 will have access to this website. Parents/Carers will also have their own Unifrog account. You'll be able to research careers, attend webinars delivered by employers and universities to learn more about their opportunities, and compare pathways so you can support your child in making an informed decision about their next steps. Below is just a glimpse of the tools and resources that can be accessed.

Careers library ✕ Careers favourited Go to tool >	Subjects library ✕ Subjects favourited Go to tool >	Know-how library ✕ Guides favourited Go to tool >	Work environments profile ✕ Quiz not taken Start >
Courses ✕ No courses added Go to tool >	MOOC Make your first shortlist Start >	Webinars Hear directly from the experts Go to tool >	Skills profile ✕ Quiz not taken Start >
Read, Watch, Listen ✕ Profiles favourited Start >	Interests profile ✕ Quiz not taken Start >	Personality profile ✕ Quiz not taken Start >	



North East
Learning Trust



Newsletter

Year 10 Work Experience Week: 8th – 12th July 2024

All Year 10 students will be undertaking Work Experience between **Monday 8th July and Friday 12th July 2024 inclusive**. The opportunity to participate in a high-quality work experience is an incredibly valuable part of preparation for Year 11 and preparing them for the world of work and adult life in general.



Planning is very important; don't leave it to the last minute!

All students have received an information pack containing all the necessary information and forms that must be completed and returned to school.

Important Dates:

- **Friday 15th March 2024** – All completed placement forms to be returned to school.
- **April to May** – Penshaw View (our partnership company) will carry out all necessary Health and Safety checks with the companies to ensure that it is suitable for your child to attend.
- **June** – students will receive relevant details for their placement – what to wear, travel and lunch arrangements etc.

benefits

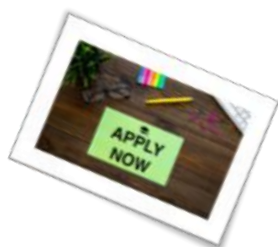
Work experience placements offer invaluable opportunities for Year 10 students to gain practical insights into the working world, fostering essential skills and values that will benefit them throughout their academic and professional journeys. By immersing themselves in real workplace environments, students cultivate a strong work ethic, resilience, and adaptability as they navigate new challenges and responsibilities. These placements provide a platform for students to explore potential career paths, enabling them to make informed decisions about their future endeavours. Moreover, the interpersonal skills developed through interaction with colleagues and supervisors enhance students' communication abilities and teamwork proficiency, crucial assets in any professional setting. Ultimately, work experience placements not only supplement academic learning but also instil qualities of initiative, self-confidence, and professional conduct that are integral to success in the modern workforce.



North East
Learning Trust

Year 11 Careers Guidance

It is a very important and busy time for Year 11 students. All Year 11 students have benefited from a 1:1 Careers Guidance meeting with our Level 6 qualified Careers Advisors, Mrs Collins, and Mrs Carter. We are now in the process of offering additional support to those students who are still undecided as to what their next steps will be. Please contact Mrs Collins, your Careers Advisor or complete a self-referral form – located at Student Services



Upcoming

Post-16

Further Education Open Events

Provider	Date	Details	Time
Northern School of Art	Monday 19 th February	Open Event	10.00am -12.00pm
Middlesbrough College	Tuesday 6 th February	Technical Training & Engineering Event	4.00pm – 6.00pm
East Durham College ED6	Thursday 8 th February	ED6 – A Level Open Event	5.00pm – 6.30pm
East Durham College	Monday 19 th February	Year 11 half term taster day	10.00am -2.00pm
EDC Houghall Campus	Wednesday 28 th February	Open Evening	5.00pm -6.30pm
Newcastle College	Wednesday 7 th February	Open Evening	4.45pm – 7.00pm
Hartlepool College	Thursday 8 th February	Apprenticeship Event	5.00pm -8.00pm

Support for Parents and Carers

Making sure that young people are aware and take advantage of all the opportunities available to help set them up for a successful career and a good quality of life is a challenge for every parent/carer. In partnership with the school, parents/carers have an important role to play in helping their child to access information and make decisions about their career paths. We strongly encourage parents/carers to take an active role in this process. Information on how you can support your child can be found on the school website: [Careers information](#) | [Easington Academy](#)





Newsletter

College Websites

Byron Sixth Form: <https://www.st-bedes.durham.sch.uk/byron-sixth-form-college/>

Durham Sixth Form Centre: <http://www.durhamsixthformcentre.org.uk/>

East Durham College: <https://www.eastdurham.ac.uk/>

English Martyrs Sixth Form: <https://ems6.bhcet.org.uk/>

Hartlepool Sixth Form: <https://www.hartlepoolsixth.ac.uk/>

Hartlepool College: <https://www.hartlepoolfe.ac.uk/>

Middlesbrough College: <https://www.mbro.ac.uk/school-leavers>

New College Durham: <https://newcollegedurham.ac.uk/>

Northern School of Art: <https://northernart.ac.uk/>

Sunderland College: <https://www.sunderlandcollege.ac.uk/>

Useful Careers Websites

National Careers Service:

<https://nationalcareers.service.gov.uk/>

Prospects: <https://www.prospects.ac.uk/>

ICould: <https://icould.com/>

Careers Box: [Home - CareersBox](#)

Careers4U: [Careers4u –](#)

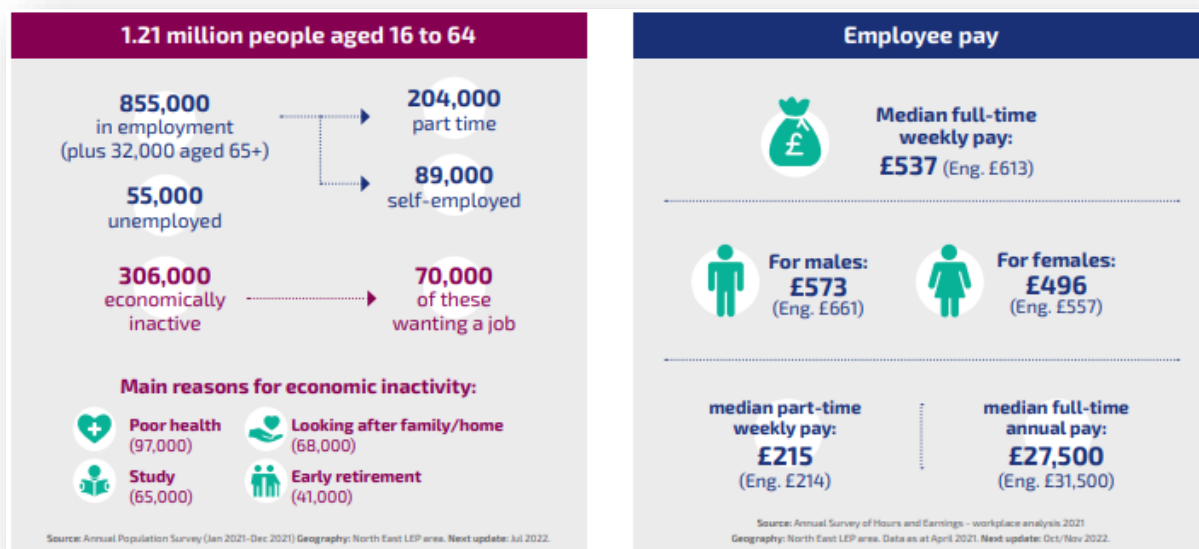
Labour Market Information (LMI) Careerometer

Careerometer lets you compare the average wages and working hours of up to three jobs in England. You can also use it to find out the predicted demand for these jobs in the future.

How to use it: Type in the first career that you're interested in and select from the drop-down list, then add your second and third choices to see the comparison.

Check it out here: [Careerometer – LMI For All](#)

The Northeast labour market.



North East
Learning Trust